

**KRT19 Antibody (C-term)**  
**Affinity Purified Rabbit Polyclonal Antibody (Pab)**  
**Catalog # AP2823b****Specification**

---

**KRT19 Antibody (C-term) - Product Information**

Application	WB, IHC-P,E
Primary Accession	<a href="#">P08727</a>
Reactivity	Human
Host	Rabbit
Clonality	Polyclonal
Isotype	Rabbit IgG
Calculated MW	44106
Antigen Region	336-365

**KRT19 Antibody (C-term) - Additional Information****Gene ID** 3880**Other Names**

Keratin, type I cytoskeletal 19, Cytokeratin-19, CK-19, Keratin-19, K19, KRT19

**Target/Specificity**

This KRT19 antibody is generated from rabbits immunized with a KLH conjugated synthetic peptide between 336-365 amino acids from the C-terminal region of human KRT19.

**Dilution**

WB~~1:1000

IHC-P~~1:50~100

E~~Use at an assay dependent concentration.

**Format**

Purified polyclonal antibody supplied in PBS with 0.09% (W/V) sodium azide. This antibody is purified through a protein A column, followed by peptide affinity purification.

**Storage**

Maintain refrigerated at 2-8°C for up to 2 weeks. For long term storage store at -20°C in small aliquots to prevent freeze-thaw cycles.

**Precautions**

KRT19 Antibody (C-term) is for research use only and not for use in diagnostic or therapeutic procedures.

**KRT19 Antibody (C-term) - Protein Information****Name** KRT19**Function** Involved in the organization of myofibers. Together with KRT8, helps to link the

contractile apparatus to dystrophin at the costameres of striated muscle.

#### Tissue Location

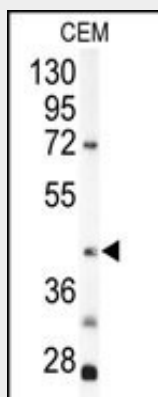
Expressed in a defined zone of basal keratinocytes in the deep outer root sheath of hair follicles. Also observed in sweat gland and mammary gland ductal and secretory cells, bile ducts, gastrointestinal tract, bladder urothelium, oral epithelia, esophagus, ectocervical epithelium (at protein level). Expressed in epidermal basal cells, in nipple epidermis and a defined region of the hair follicle. Also seen in a subset of vascular wall cells in both the veins and artery of human umbilical cord, and in umbilical cord vascular smooth muscle. Observed in muscle fibers accumulating in the costameres of myoplasm at the sarcolemma in structures that contain dystrophin and spectrin.

#### KRT19 Antibody (C-term) - Protocols

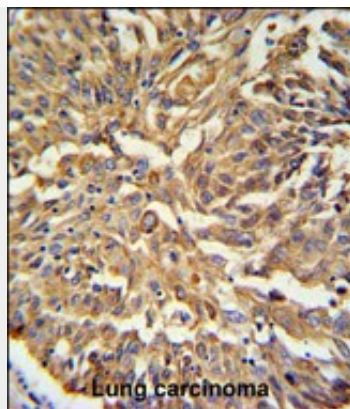
Provided below are standard protocols that you may find useful for product applications.

- [Western Blot](#)
- [Blocking Peptides](#)
- [Dot Blot](#)
- [Immunohistochemistry](#)
- [Immunofluorescence](#)
- [Immunoprecipitation](#)
- [Flow Cytometry](#)
- [Cell Culture](#)

#### KRT19 Antibody (C-term) - Images



Western blot analysis of KRT19 Antibody (C-term) (Cat.# AP2823b) in CEM cell line lysates (35ug/lane). KRT19 (arrow) was detected using the purified Pab.



KRT19 Antibody (C-term) (Cat.# AP2823b) IHC analysis in formalin fixed and paraffin embedded human Lung carcinoma followed by peroxidase conjugation of the secondary antibody and DAB staining. This data demonstrates the use of the KRT19 Antibody (C-term) for immunohistochemistry. Clinical relevance has not been evaluated.

#### **KRT19 Antibody (C-term) - Background**

KRT19 is a member of the keratin family. The keratins are intermediate filament proteins responsible for the structural integrity of epithelial cells and are subdivided into cytokeratins and hair keratins. The type I cytokeratins consist of acidic proteins which are arranged in pairs of heterotypic keratin chains. Unlike its related family members, this smallest known acidic cytokeratin is not paired with a basic cytokeratin in epithelial cells. It is specifically expressed in the periderm, the transiently superficial layer that envelopes the developing epidermis.

#### **KRT19 Antibody (C-term) - References**

Bonzanini,M., Acta Cytol. 52 (5), 541-548 (2008)  
Yang,X.R., Clin. Cancer Res. 14 (12), 3850-3859 (2008)  
Maurer,J., PLoS ONE 3 (10), E3451 (2008)